

Long Term Goals for Long-Term Care

Why should my paramedic service implement CP@clinic/CP@home for the LTC waitlist?

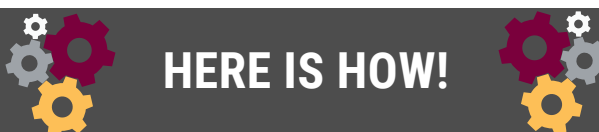
CP@clinic/CP@home prioritizes **long term impact** for patients and the healthcare system. CP@clinic /CP@home is the only evidence based wellness program for older adults that has been proven to reduce chronic illness and improve health system outcomes.

IS CP@CLINIC/CP@HOME SUSTAINABLE?

Yes!

What to expect when you implement CP@clinic/CP@home:

- Cost saving
- Won't go out of date
- Long term database maintenance and data storage
- Better community health outcomes
- Demonstrate your impact to funders



Paramedic Service Investment

- Community paramedic service capacity
- Implement program for long-term care waitlist population

Current: FREE of cost!
(database supported through research grants)
Future: cost paid directly to EMR providers

FREE of cost!

FREE of cost!

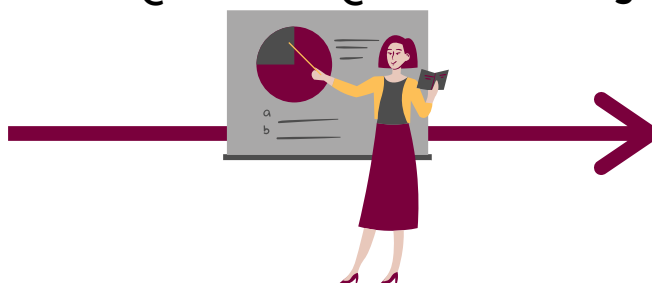
CP@clinic/CP@home Program Implementation



Data Collection and Storage



CP@clinic/CP@home Training



Impact Reporting



Program Components

- Community Paramedics certified in CP@clinic/CP@home training
- CP@clinic/CP@home adapted for long-term care waitlist population
- **NEW!** Ontario Government funding available for long-term care
- Community resources

- Easy to use SMART database with up-to-date decision support
- Data privacy and encryption compliant with EMR standards
- **NEW!** Integration with paramedic EMRs, including Interdev (March 2021) and PreHos (coming soon) - for database sustainability

- Updated annually to reflect best practices, up-to-date research
- Annual audits to keep community paramedics up to date
- **NEW!** Refresher courses underway
- **NEW!** Accredited by Global Paramedic Higher Education Council (GPHEC)

- Automated Ministry report generation built into database
- Quarterly customized stakeholder reports including successes, updates, new developments
- McMaster Community Paramedicine Research Team uses results for quality improvement of training and development